

Standard Preparation Sink for Dishwasher with 2 Bowls & Right Drain

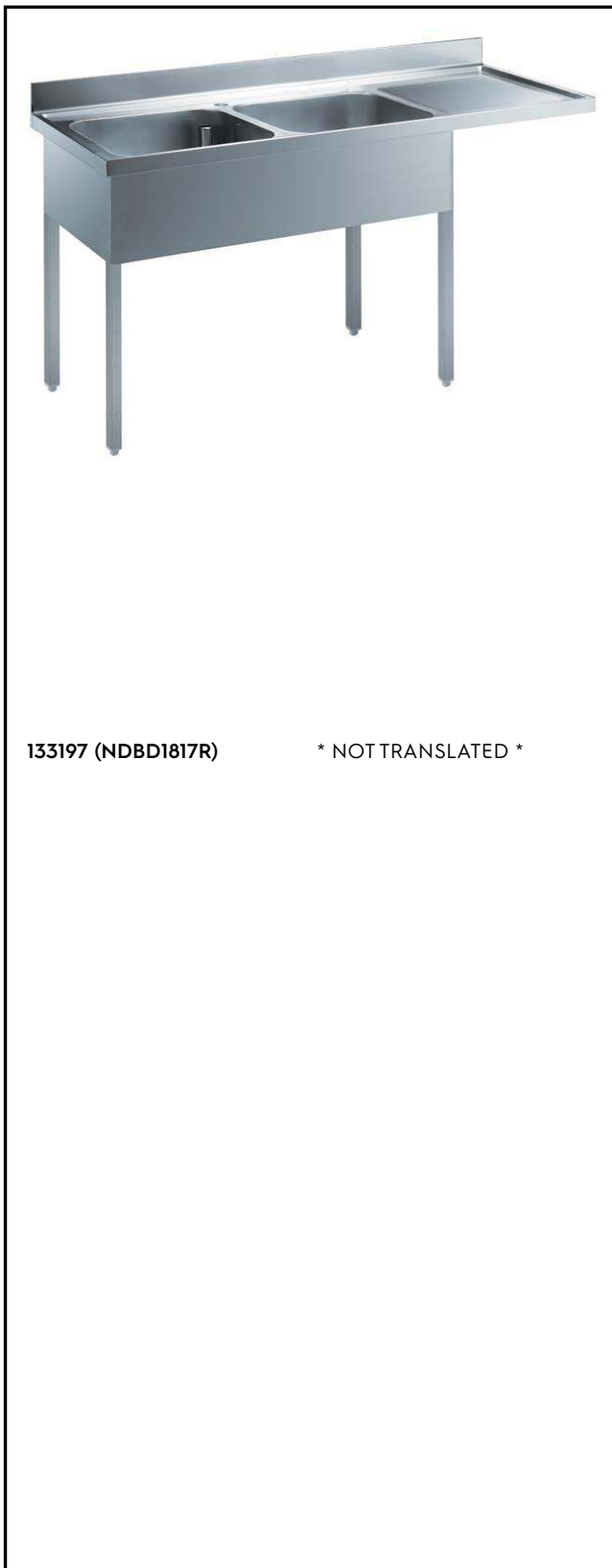
ITEM # _____

MODEL # _____

NAME # _____

SIS # _____

AIA # _____



133197 (NDBD1817R)

* NOT TRANSLATED *

Main Features

- Sturdiness, stability and reliability of table accurately tested.

Construction

- Sink tops easily slotted onto the legs and taps are easily installed from the rear.
- Square section legs and 40 mm height-adjustable feet in 304 AISI stainless steel.
- 100 mm upstand with 8 mm radiused corner and 13 mm deep, designed to be used against a wall.
- 50 mm worktop in 304 AISI stainless steel, 10/10 in thickness with overflow rim along the top.
- 40 mm-thick lower shelf slots easily into place at a height of 200 mm from the floor. solid shelves supplied as standard, perforated shelves supplied on request.
- Bottom part of drain left free to house an undercounter dishwasher.
- Wide range of taps are available to suit every need.
- Drainage area suitable for drying operations
- 100 mm upstand with 10 mm radiused corner and 13 mm deep, designed to be used against a wall.

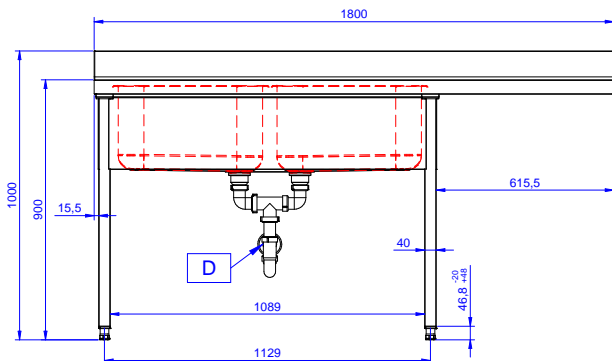
Optional Accessories

- Double plastic drain syphon 2" PNC 850022 ☐
- LOWER SHELF FOR 1200 MM TABLES PNC 855145 ☐
- 3-SIDED UNDERFRAME FOR 1200 MM TABLES PNC 855152 ☐
- - NOT TRANSLATED - PNC 855299 ☐
- Maxi reel retractable hose spray unit, 10m PNC 855320 ☐
- Maxi reel retractable hose spray unit, 15m PNC 855321 ☐
- Elbow operated mixer tap with spout 3/4", single hole PNC 855322 ☐
- Elbow operated mixer tap with short spout 3/4", single hole PNC 855323 ☐
- Maxi reel retractable hose spray unit, 6m PNC 855327 ☐
- Foot operated mixer tap (hot and cold) with spout 3/4" PNC 855328 ☐
- FLOOR FASTENING KIT FOR 2 SQUARE LEGS PNC 865386 ☐
- False bottom for right/hand 500x500 bowl PNC 895200 ☐
- Single plastic drain syphon 2" PNC 895313 ☐

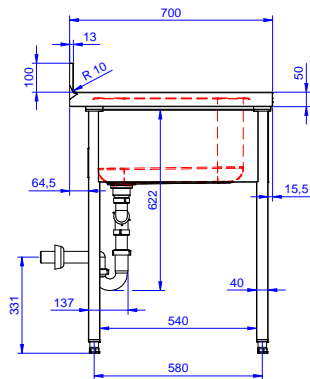
APPROVAL: _____

Standard Preparation Sink for Dishwasher with 2 Bowls & Right Drain

Front

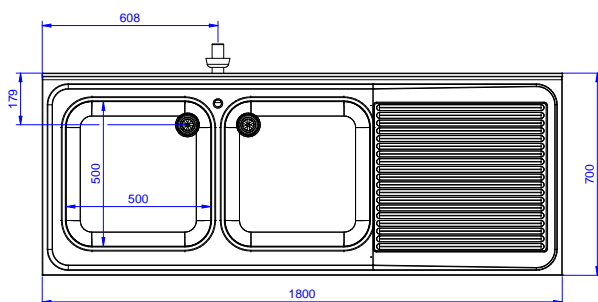


Side



D = Drain

Top



Key Information:

External dimensions, Width:	1800 mm
133197 (NDBD1817R)	
External dimensions, Depth:	700 mm
External dimensions, Height:	1000 mm
Upstand Dimensions, Height:	100 mm
Upstand Dimensions, Depth:	13 mm
Upstand Dimensions, Radius:	R=16
Bowls number	2
Bowl dimensions	500x500xH250
Worktop thickness:	50 mm
Net weight:	62 kg